

CANADIAN AUTOMOTIVE MUSEUM



Family Day Activity Book





CANADIAN AUTOMOTIVE MUSEUM

99 Simcoe St. S. Oshawa, ON

(905) 576-1222

canadianautomotivemuseum.com

Museum Hours

Tuesday - Saturday, 10am-4pm



**CHILDREN 5 AND UNDER ARE
ADMITTED FREE OF CHARGE!**



Collection Spotlight

Amphicar



Half car, half boat...
The Amphicar turns your
relaxing drive into a
relaxing float! You can't
sail the ocean in this
automobile, though.
It's freshwater only for
the Amphicar!



The Amphicar is named
after amphibians!
Amphibians, like frogs and
salamanders, spend parts
of their life cycle both
on land and in water.

ROAD TRIP BINGO!

Check off the boxes
as you see these things on your
trip! Good luck spotting them all!

water
tower

convertible

COWS

yellow
car

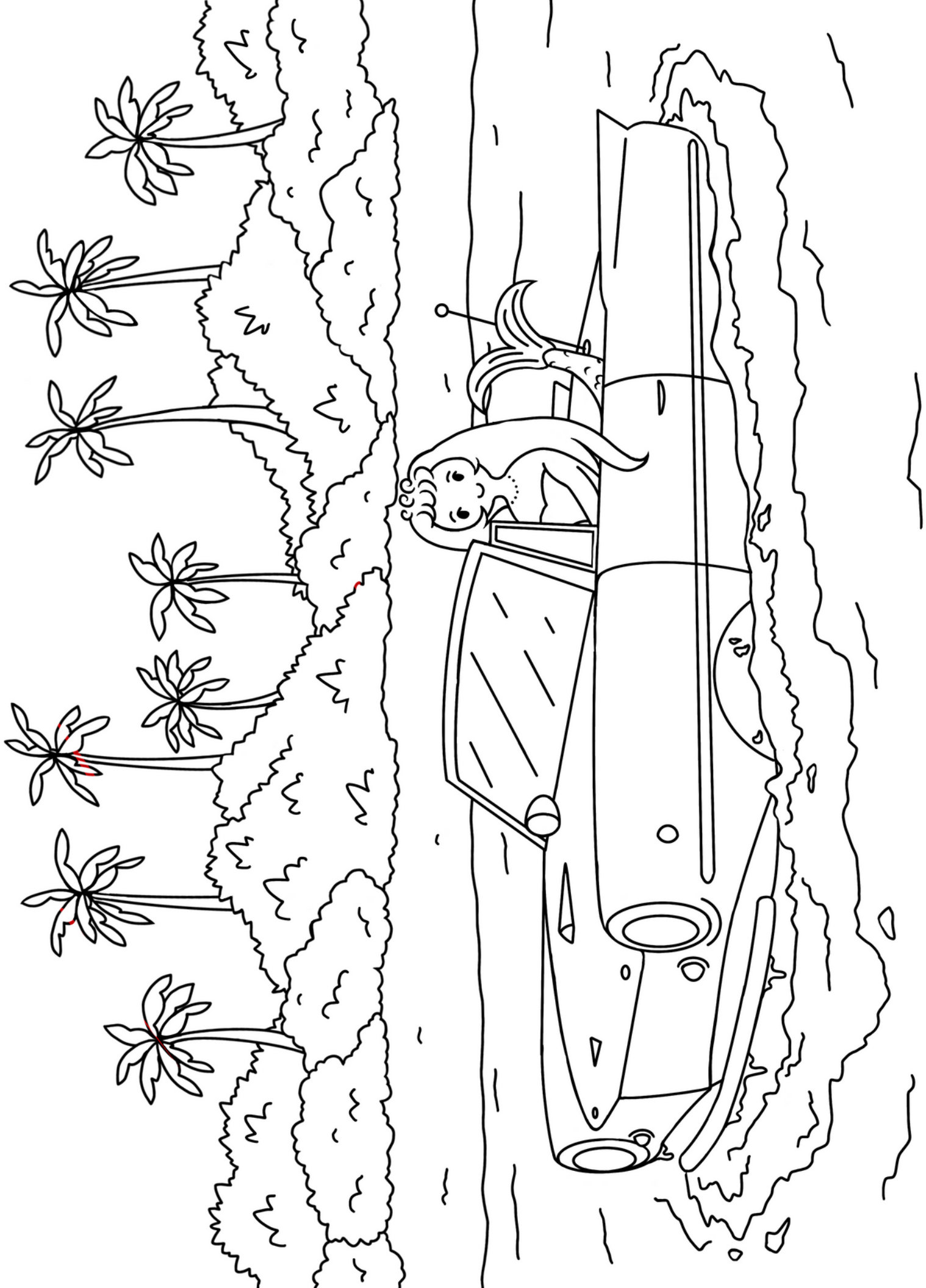
stuck in
traffic

double
decker
bus

transport
truck

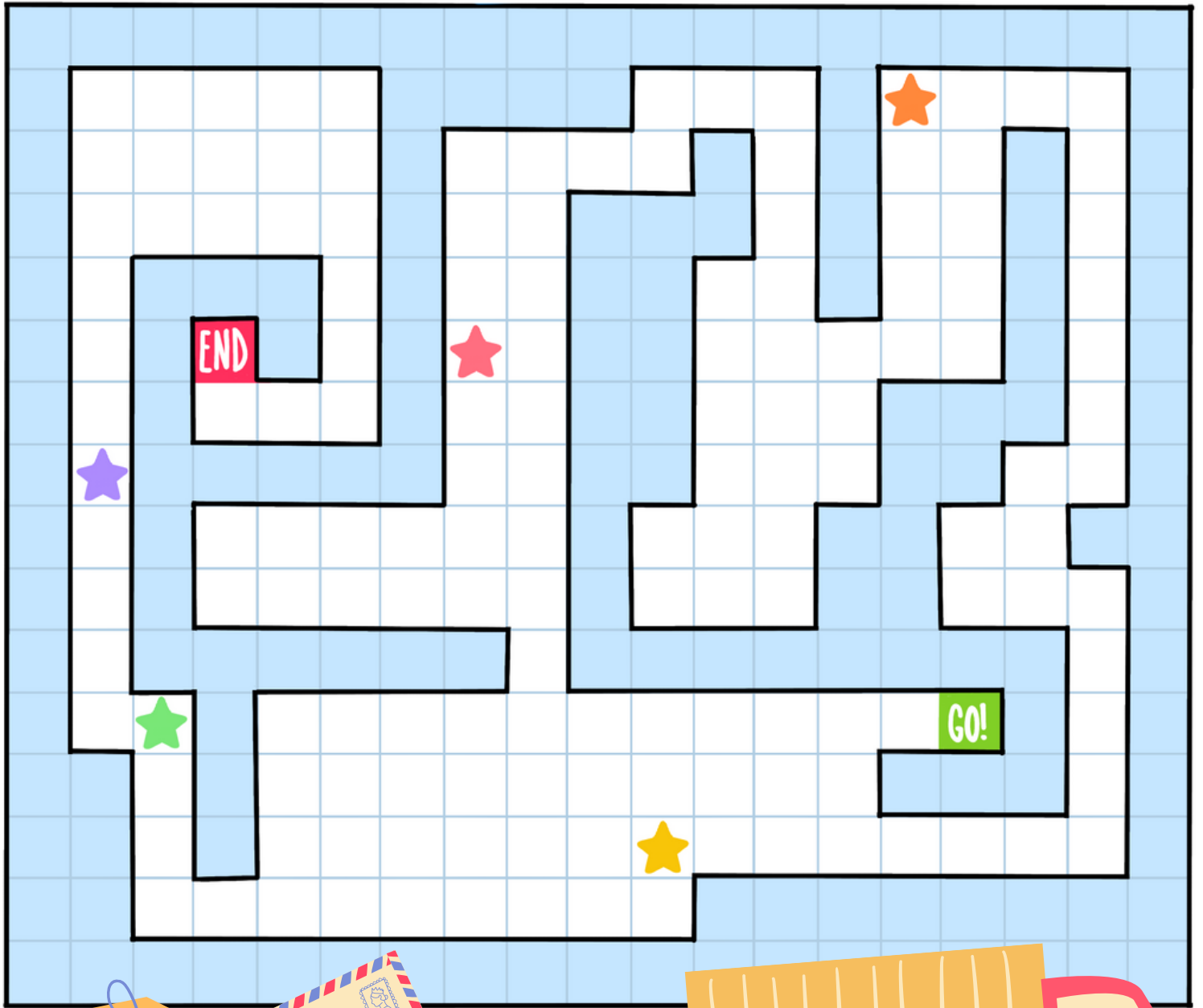
construction
work

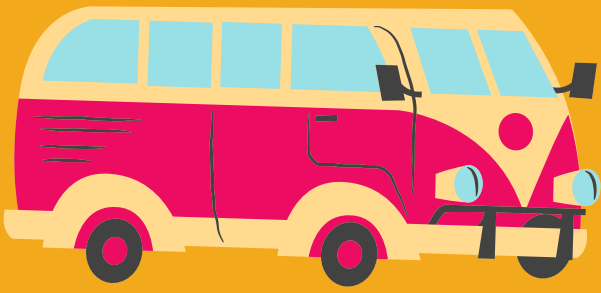
farmers'
market



DELIVERY DROP OFF!

You have some very important mail to deliver!
Complete the puzzle by creating a route that
drives past all five stars. But that's not all!
Make sure to use ALL the tiles, and
remember each tile can only be used ONCE!
Time to get a move on!





Complete the other half
of the drawing!



TRAFFIC JAM!



Word Search Puzzle: Road Safety

Find the hidden words in the puzzle. Words may be placed across, up and down, or diagonally in the puzzle. Look out – words can be hidden both forwards and backwards!

X H L P Q D G T N I X B D Y J
N I H S V L E W L B N G D E Y
E G M T E Z T R K E K Q N L Y
E H Z O A F A Q O W B U J L W
R W S P E E D L I M I T F O Y
G A K S I D E W A L K Z A W T
U Y S I R W I G R D T E A E Q
J L U G U P M U B D E E P S S
Q X J N F K L A W S S O R C W
C Z T B F G Z V E S N E C I L
T T B R A K E V U L R R O Q U
Z H N E V Z Q O D D B U O F F
Y T N M V P G Q G A B R I A N
V V T H G I L C I F F A R T D
U I Y Y Y S R O A D B L O C K

HIDDEN WORDS

SEATBELT
CROSSWALK
STOP SIGN
GREEN
HIGHWAY
LICENSE

AIRBAG
SPEED LIMIT
RED
ROAD
SPEED BUMP

TRAFFIC LIGHT
BRAKE
YELLOW
SIDEWALK
ROADBLOCK

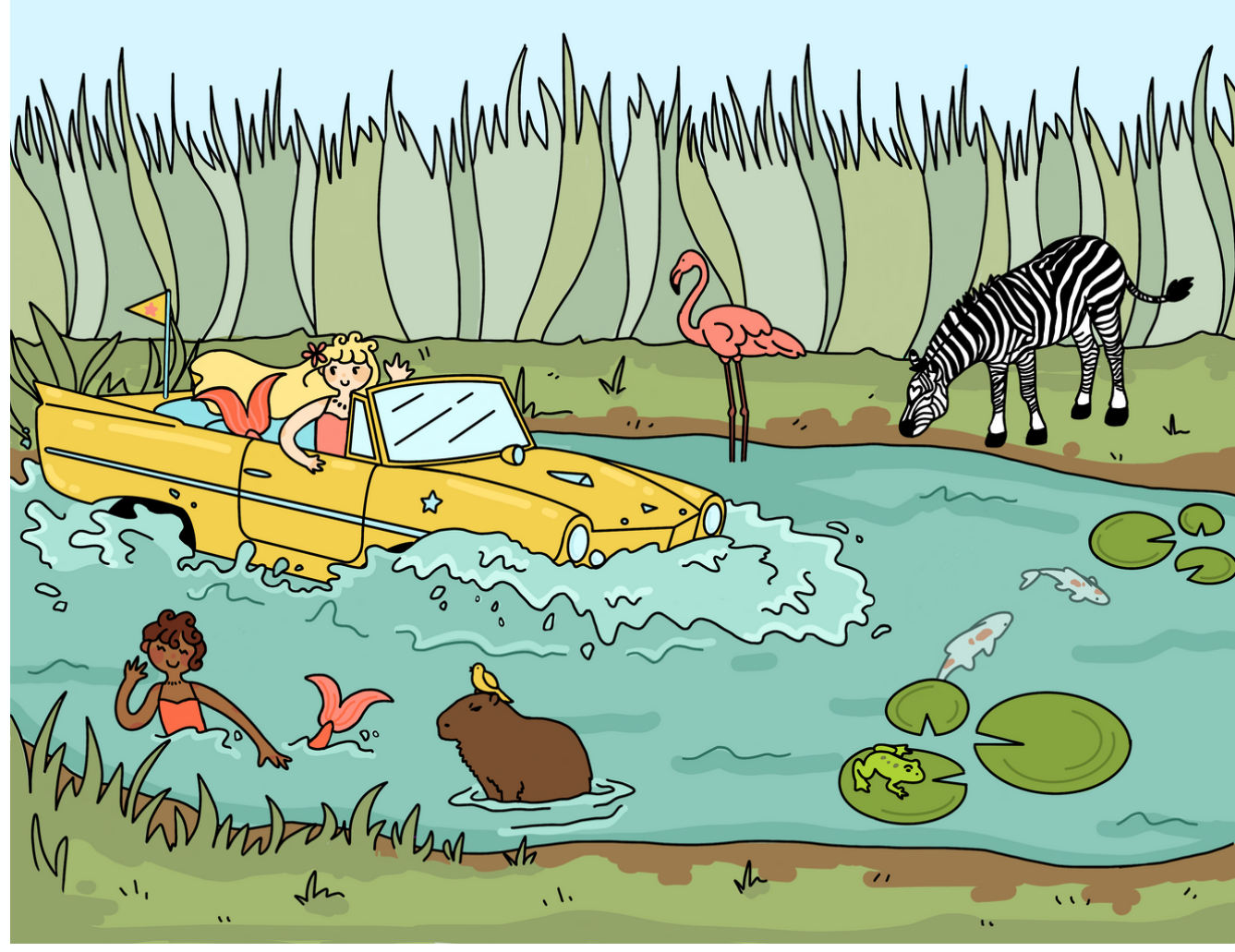


Which is the shortest path to the tent?



Spot the Differences!

There are 10 differences between the two pictures. Can you find them all?



Recycled Material Amphicar

Time: ~ 2 hours plus waiting time **Age:** 8+ years old *Adult supervision required to use the drill*

The Amphicar is exciting because it drives on land and floats on water! We can replicate the Amphicar using easy to find recyclables and craft supplies. When building your Amphicar model it is important to ensure the body is waterproof - if water fills the body the model will sink! For this craft we use hot glue to seal any places water could get in.

IMPORTANT:

This craft uses a hot glue gun and a drill. Both of these tools must be handled carefully because they can be dangerous if used incorrectly. It's best to be safe and ask an adult for help with these tools!

Supplies: milk or juice carton - any size! (0.5L, 1L, 2L)

4 plastic bottle lids

2 plastic straws

hot glue gun & hot glue sticks

scissors

marker

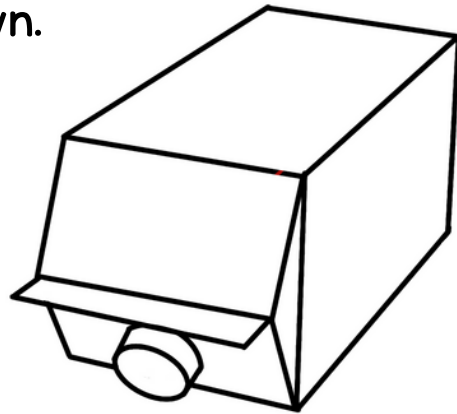
playdoh

paint & paint brushes

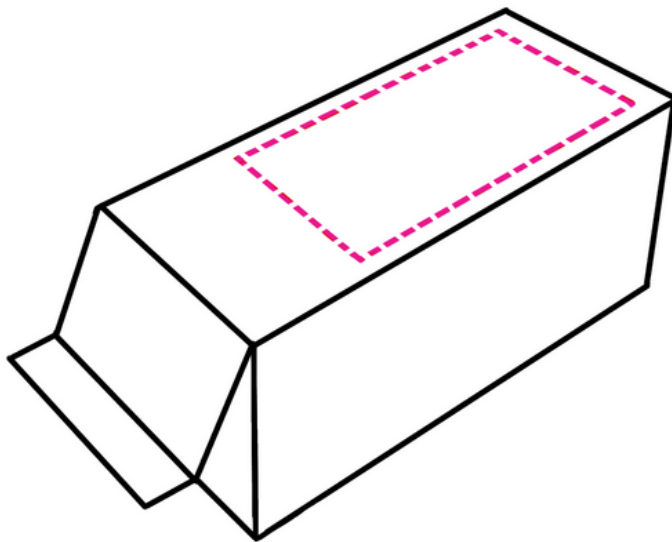
drill *Ask an adult for help using a drill!*

Recycled Material Amphicar

1. Clean your carton, bottle lids, and plastic straws thoroughly with soap and water.
2. Place the carton on a table with the front side facing down.

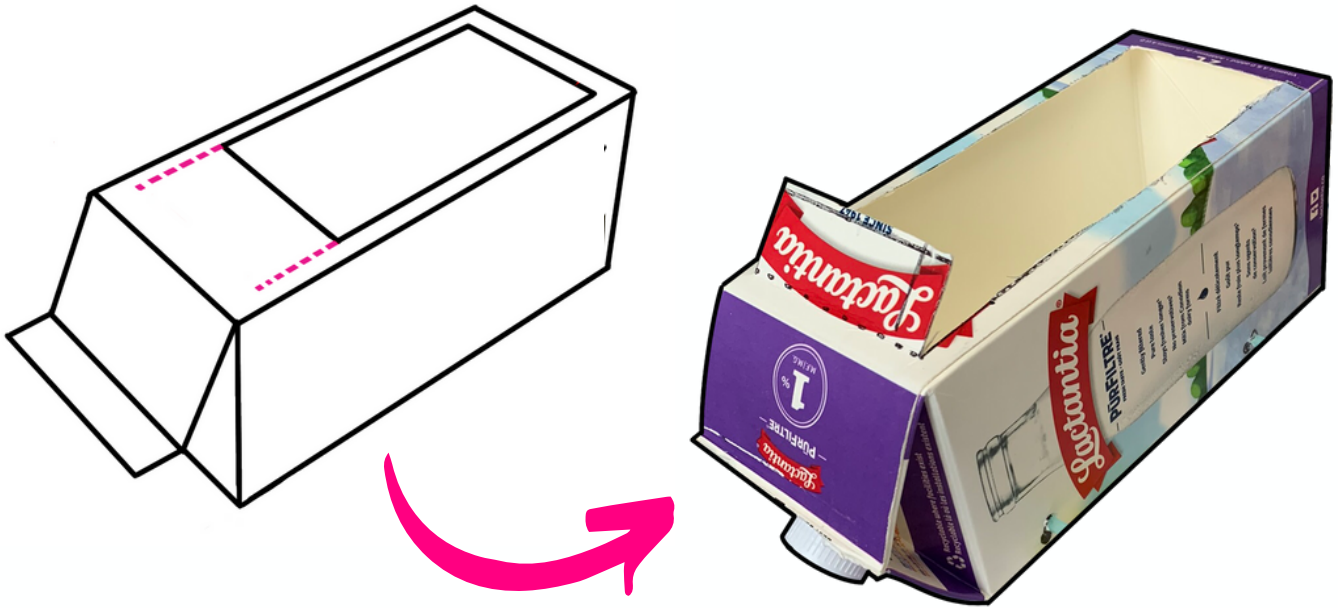


3. Use the marker to draw a rectangle on the side facing up. The rectangle should take up about $\frac{3}{4}$ of the panel. Use the scissors to cut the rectangle out.



Recycled Material Amphicar

4. Cut the short sides of the remaining 1/4 and fold the flap up. This flap will be the windshield!



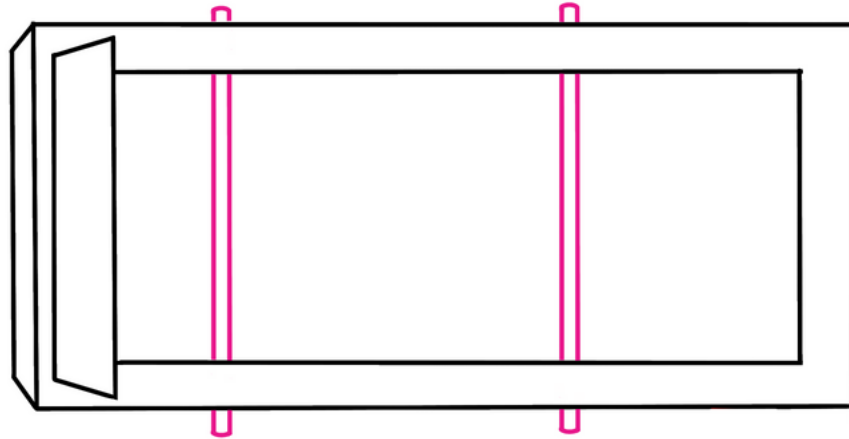
5. You can use the piece you cut out in step 3 to make decorations for your car, like tail fins or headlights! Use a hot glue gun to fasten any decorations to the body of the car.



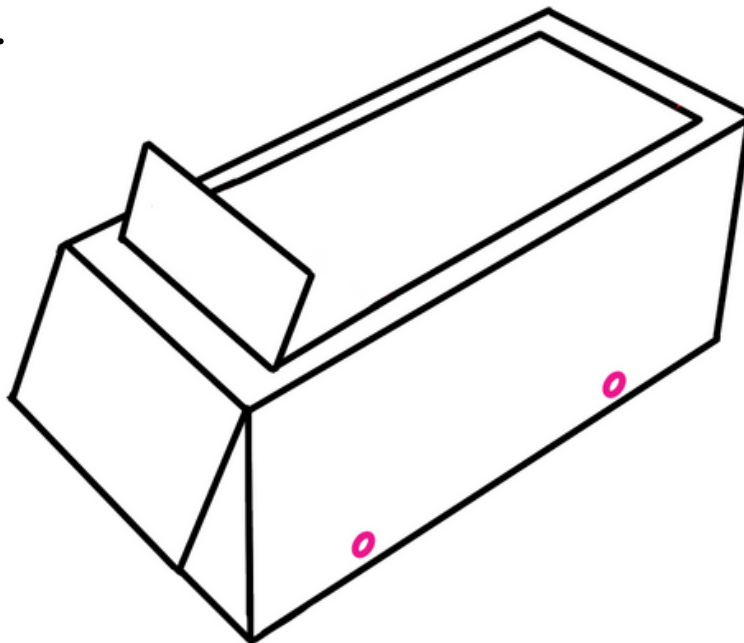
Careful!
Hot glue guns can heat up quickly, so be careful not to burn yourself. If you're not familiar with using a hot glue gun, ask someone who is for help!

Recycled Material Amphicar

6. Next, you will prepare to attach your axel and wheels. The axel will pass through the body of the model.

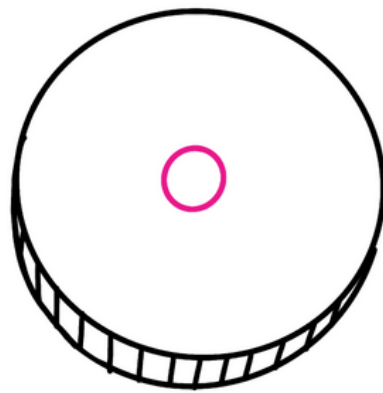


Use the marker to draw where your axel will pass through the body. Your markings on the right side should be directly across from those on the left side. These holes will be the same width as the straw.



Recycled Material Amphicar

7. Use the marker to draw where your axel will pass through the bottle lids - this spot should be the middle of the lid. These holes will be slightly wider than the straw.



8. After marking where your holes will be, you are ready to add them. Use a pair of scissors to carefully create holes in the carton.

For the bottle lids you will need to use a drill. STOP HERE and find an adult who can help you drill holes in the bottle lids.

DO NOT DO THIS PART ALONE!

Recycled Material Amphicar

9. Make sure the straws fit snugly in the carton, and that the bottle lids can spin easily on the straw.
10. Use the hot glue gun to secure the straws in the holes to the carton. Make sure the glue covers any gaps! When the glue dries it will ensure no water leaks into the body.
11. Once the glue is dry test your car in a tub of water. If there are no leaks in the body you can move on. If water does enter the body use more hot glue around the axel to seal the leaks. Test again once the glue dries.



Recycled Material Amphicar

- 12.** You should now have your car with the axels attached, and your unattached wheels that each have a hole in them. At this point, you're ready to decorate your car using paint and other supplies!
- 13.** Decorate your car and allow the paint to dry completely.
- 14.** Slide the wheels onto the axels. They will be loose!
- 15.** Use a small amount of playdoh on each axel to prevent the wheel from slipping off.



Recycled Material Amphicar

16. Your model Amphicar is finished! Have fun!

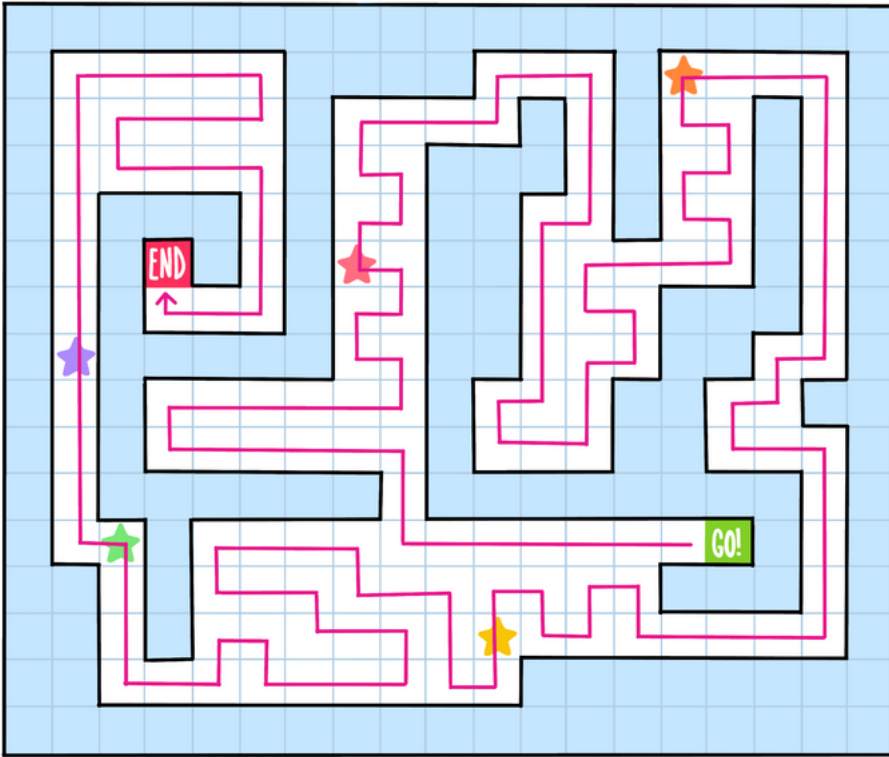


NICE!



Answer Sheet

DELIVERY DROP OFF!



There are multiple solutions to this puzzle! The exact path you take doesn't matter, as long as you use ALL the tiles and pass the stars in this order:

- PINK
- ORANGE
- YELLOW
- GREEN
- PURPLE



TRAFFIC JAM!

X	H	L	P	Q	D	G	T	N	I	X	B	D	Y	J
N	I	H	S	V	L	E	W	L	B	N	G	D	E	Y
E	G	M	T	E	Z	T	R	K	E	K	Q	N	L	Y
E	H	Z	O	A	F	A	Q	O	W	B	U	J	L	W
R	W	S	P	E	E	D	L	I	M	I	T	F	O	Y
G	A	K	S	I	D	E	W	A	L	K	Z	A	W	T
U	Y	S	I	R	W	I	G	R	D	T	E	A	E	Q
J	L	U	G	U	P	M	U	B	D	E	E	P	S	S
Q	X	J	N	F	K	L	A	W	S	S	O	R	C	W
C	Z	T	B	F	G	Z	V	E	S	N	E	C	I	L
T	T	B	R	A	K	E	V	U	L	R	R	O	Q	U
Z	H	N	E	V	Z	Q	O	D	D	B	U	O	F	F
Y	T	N	M	V	P	G	Q	G	A	B	R	I	A	N
V	V	T	H	G	I	L	C	I	F	F	A	R	T	D
U	I	Y	Y	Y	S	R	O	A	D	B	L	O	C	K



Path 2 and 3 are the same length!



Answer Sheet

Spot the Differences!

